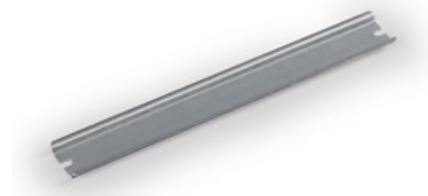


ENSTO

DIN rail

DR35090.4

Code DR35090.4
 GTIN 6418677156106
 Name DIN rail Ensto Cubo S
 DIN rail, length 100 mm, width 35 mm,
 DIN 46277/3, galvanized steel
 Description Accessory for Ensto Cubo S thermoplastic
 enclosures
 Vendor



Technical specification

Others

ETIM Class: EC001285

Dimensions

Net Weight: 0.032 kg

Size: 35 x 100

Volume : 2.56 cm³

Weight: 0.03 kg

ETIM 7

Etim

Drill hole distance centrally: 90 mm

Height: 7.5 mm

Length: 100 mm

Material: Steel

Material thickness: 1 mm

Model: DIN rail (top hat rail) 35/7.5 mm

Punch shape: None

Surface finishing: Galvanized

Packaging

Default package

Unit:	PCE
Package size:	10
Width:	100
Height:	200 mm
Weight:	0.322 kg